

NEWS FROM AROUND SCHOOL

THANK YOU

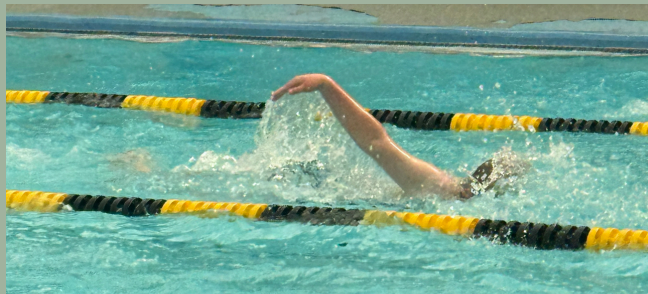
Thank you to our wonderful community — from all of us at Waitati School, we're so grateful for everyone who came along to help in the garden. Whether you joined us on the day or have been putting in hours behind the scenes, your mahi is truly appreciated. It was a fantastic afternoon celebrating our superstar volunteers who have poured so much time and care into the schoolhouse. The results are outstanding and will provide valuable support for the school in the year ahead.



THREE PEAKS SWIMMING

Thank you to all the parents who transported kids to Palmerston, helped get our swimmers ready, and cheered from the sides!

Congratulations to Rosa, Zara, Frances, Ardie, Polly, Elizabeth & Puawai - You all did so well!



COMING UP THIS WEEK - THREE WAY CONFERENCES

It's that time of year again when we come together to celebrate your child's learning and set goals for the year ahead. We warmly invite you to book a time to come in with your child to meet their teacher. Having students involved in these conversations is important for them to take ownership of their learning.

DATES & TIMES

- **Tuesday 3 March, 3.15–5.00 pm**
- **Wednesday 4 March, 4.00–6.30 pm**

We hope one of these times works well for your whānau. If not, just let us know, and we'll do our best to find something that fits.



How to Book



Please email contact@waitati.school.nz with your preferred date and time, or call the office 03 482 2888. We'll match you with the closest available slot.



Remember to wear sunscreen and bring a hat every day!

SICKNESS



Thank you for keeping your children home when they are sick. If you are keeping children at home then use the Edge app to let us know or call 03 482 2888

PB4L Focus of the week

Watching out for others' personal space.



Taking turns when everyone wants the same thing.

COMING UP THIS WEEK!

Sun 01 Mar

- **Waitati Sunday Market - Cancelled**

Mon 02 Mar

- Music lunch club with Robyn
- Futsal practice at lunchtime

Tue 03 Mar

- Music with Jamie 11am - 3pm
- Music lunch club with Jamie
- Three Way Goal Setting Conferences - 3:15 - 5pm

Wed 05 Mar

- Tech at DNI for Yr 7 & 8s
- Futsal after school at the Edgar Centre
- Three Way Goal Setting Conferences 4-6.30pm

Thu 06 Mar

- Piano with Brenda 11am - 1pm
- Lunch delivery from Blueskin Nurseries' Cafe

YEAR 6-8 PARENT HUI

Tuesday, 10th March, 3:00 pm
in the Mapounui classroom

Bring your thoughts, your big ideas, and your questions. We can't wait to hear what you have in mind!

ARE YOUR TAMARIKI INTERESTED IN SPORTS?

We have some great opportunities coming up this term. Check your email for more information or contact our Sports Co-ordinator

becsdesfountain@waitati.school.nz

BLUESKIN NURSERIES' CAFE LUNCH DELIVERY HOT CHIP WEEK!

Here is the latest menu from the Blueskin Nurseries Cafe. Place your orders at the cafe by midday on Tuesdays for delivery to school on Thursdays.

This menu is also available on our website.

WEEK 4 5th March	COST
Chunky Fries	\$4.70
Raspberry Marshmellow slice (gf)	\$4.70

FUNDRAISING NEWS



AGM

We are working on a new AGM meeting date, so we can get as many people to come along as possible. At the AGM we appoint the office bearers, review the year just gone and plan for the year ahead. We will aim to meet this coming month and get all your ideas going.

JOIN US!

Are you interested in joining the team of fundraisers?

We urgently need PTA members. Please consider attending 4 meetings a year, 1-2 markets a year, and helping to organise a larger fundraising event in Term 2 - probably a bingo night.

If time isn't possible, then donations are always welcome. Every contribution - big or small - helps us to keep doing the work that matters for our kids.

A huge thank you to all the families that have already donated. Whether it's time or money, it all helps.

WAITATI MARKETS

We are taking a break from the market this week, while we sort some paperwork around food handling.

Watch this space for more info.

THE POSSUM CAFE - BLUESKIN SHOW

We will be running the Possum Cafe at the Blueskin Show this year. We will need donations of baking and help on the day to run the cafe.

SAVE THE DATE - Sunday 29th March

FRIDAY COFFEE CATCH UP

Are you free on Friday mornings after drop off, for a coffee and a catch up? A group of parents are keen to get together at the nurseries' cafe, so if you interested then get in touch.

pta@waitati.school.nz

LOOKING FOR EXPRESSIONS OF INTEREST

We are wondering if people are interested in a paint and sip evening. An art class with a glass of wine and a catch up with friends in a local setting.

Let us know here: pta@waitati.school.nz

FIREWOOD FUNDRAISER

We have a load of wood to split and sell - Can you help?

Let us know here: pta@waitati.school.nz

Our account is Waitati School - 02-0900-0000305-000

If you are interested in contributing towards a pay-it-forward scheme, then please get in touch

Our School's Attendance Plan

Our target is 90%
Justified attendance

This target ensures students are present and engaged in their learning, which is the foundation for academic and social success.

Justified Absence

- Illness or medical appointments
- Breavement or Tangi
- Approved significant family/cultural events
- Exceptional circumstances approved by the Principal

Unjustified Absence

- Staying home without a valid reason
- Shopping or family outings
- Holiday during term time (unless approved)
- No explanation provided

Our 3-Tiered Support System

Tier 1: Universal Support

For All Students

We build a positive and welcoming school environment, clearly communicate our expectations, and celebrate good attendance to encourage everyone to come to school.

TRIGGER: Attendance falls below 90% or a pattern of unjustified absence emerges.

Tier 2: Targeted Support

For Emerging Concerns

If we notice a concern, the Principal will personally contact whānau to discuss barriers. We work together to create an informal plan and increase monitoring to get things back on track.

TRIGGER: Attendance falls below 85% or concerns persist despite Tier 2 support

Tier 3: Intensive Support

For Persistent Concerns

For ongoing issues, we hold formal meetings to create a detailed attendance plan. This may involve school support staff and, with consent, external agencies, like Otago Youth Wellness Trust, to provide comprehensive help.

We're all in this together

Parents/Caregivers



Ensure your child attends on time and notify the school of any absence promptly, by texting or Edge.

Students



Attend school every day, ready to learn, and talk to an adult if you have any concerns.

School Staff



Oversee the plan, analyse data, take attendance, foster a positive environment, and coordinate support for complex cases.

School Board



Oversee and review the Attendance Management Plan, and receive attendance data reports.

Our Daily Process and Communication

A Typical School Day

1. Attendance Recording - Teacher records attendance at the start of the morning and after lunch.
2. Unexplained Absence? - If a student is absent without notice, Laura will follow up, then let the Principal know.
3. Contact home by 9:30am - Laura will contact the parent/caregivers via text or phone to check in and get an explanation for the absence.

Stay Connected



PHONE - 027 624 1781



**EMAIL -
OFFICE@WAITATI.SCHOOL.NZ**



WEBSITE - [HTTPS://WAITATI.BLOG](https://waitati.blog)



EDGE APP